

Sustainability Data Modelling



*Guiding you in your <sustainability>
reporting and strategy planning.*



CSRD Reporting

your undoubtable sustainability mission.

Did you know that, in April 2021, the European Union adopted the Corporate Sustainability Reporting Directive (CSRD)*? This new directive stipulates that from 2024, companies with 250 or more employees will have to report on the impact of their activities regarding **people, governance** and **environment**.

The CSRD directive (an extension of the NFRD - non-financial reporting directive from 2014) is at the heart of the European Union's Green Deal and is intended to ensure more transparent and better sustainability information.



Starting **today**, to get there **tomorrow**.

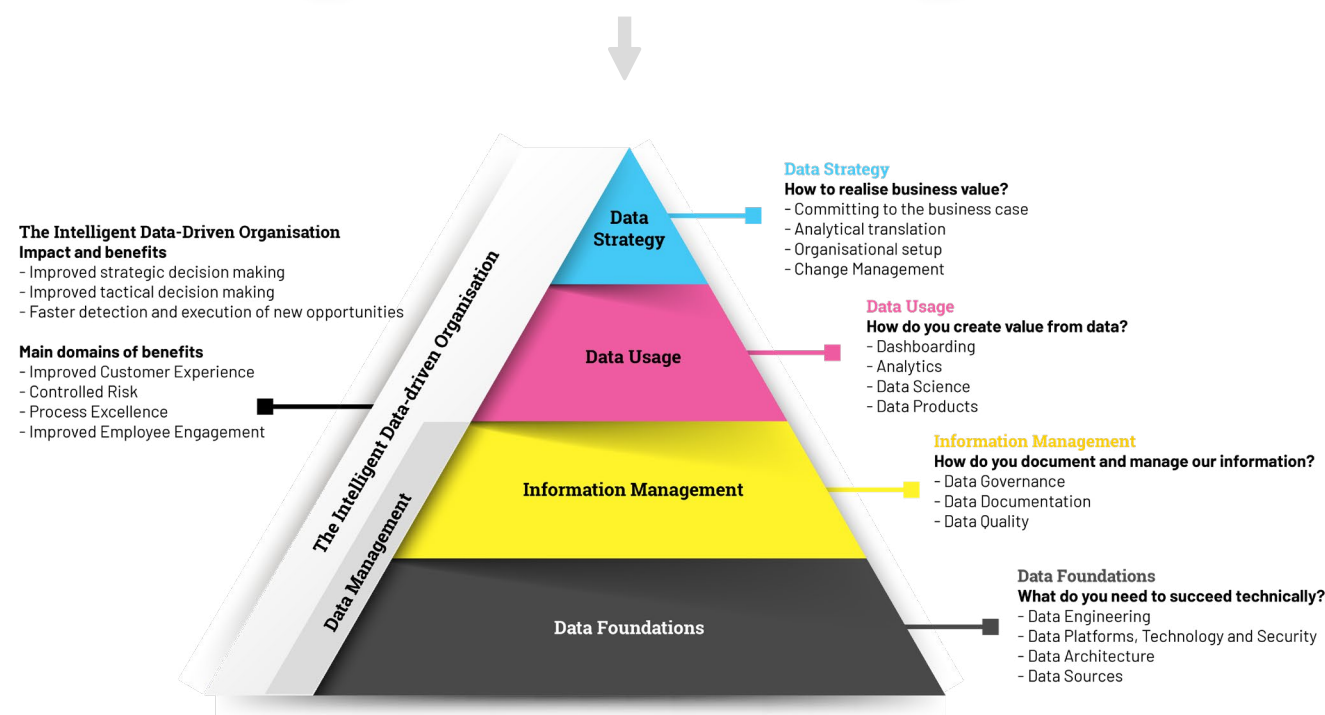
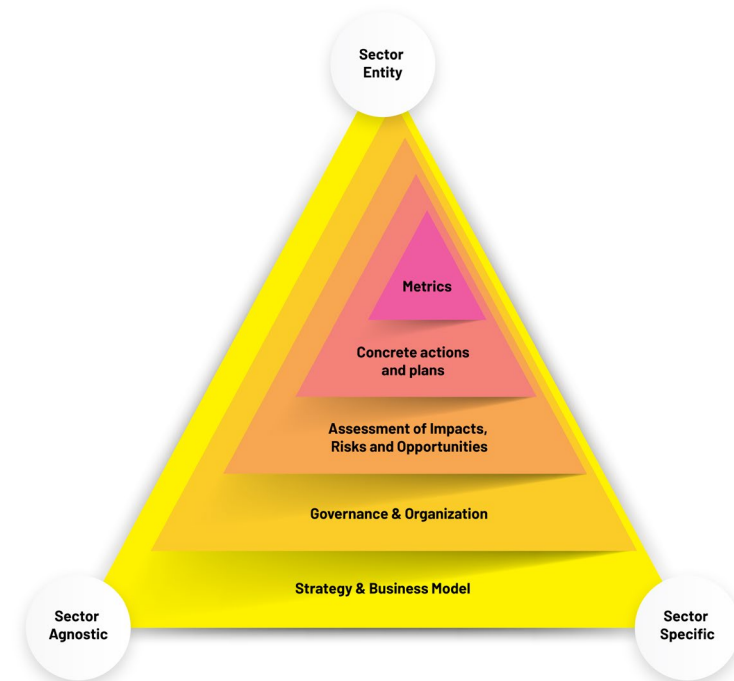
Are you one of those large companies? If so, that implies you are required to report on 2023 in 2024. More specifically: you will need to **prepare as early as 2022** to start collecting your data on 1 January 2023. So, no time to waste!

Sustainability Data Modelling in a nutshell

As part of our SMART.Business suite, Sustainability Data Modelling is designed by our data and sustainability expert team. With our far-reaching focus on process analysis, data modelling and human interactions, we guide you in your sustainability reporting and strategy development. This way, you can disclose all your sustainability-related information in order to easily comply with the CSRD & Taxonomy regulations.

Our approach

Translating CSRD requirements into a TIDO-Data Model:



Our key building blocks

Data Structure Assessment

Together with your management team and staff, we analyse the structure of your sustainability data to determine where and how your data is managed.

Digital Strategy for Sustainability & Roadmap Development

In order for you to comply with the CSRD & Taxonomy regulations, we can develop a strategic roadmap that will align your sustainability, business & ICT strategy.

Data Lake Model Solution

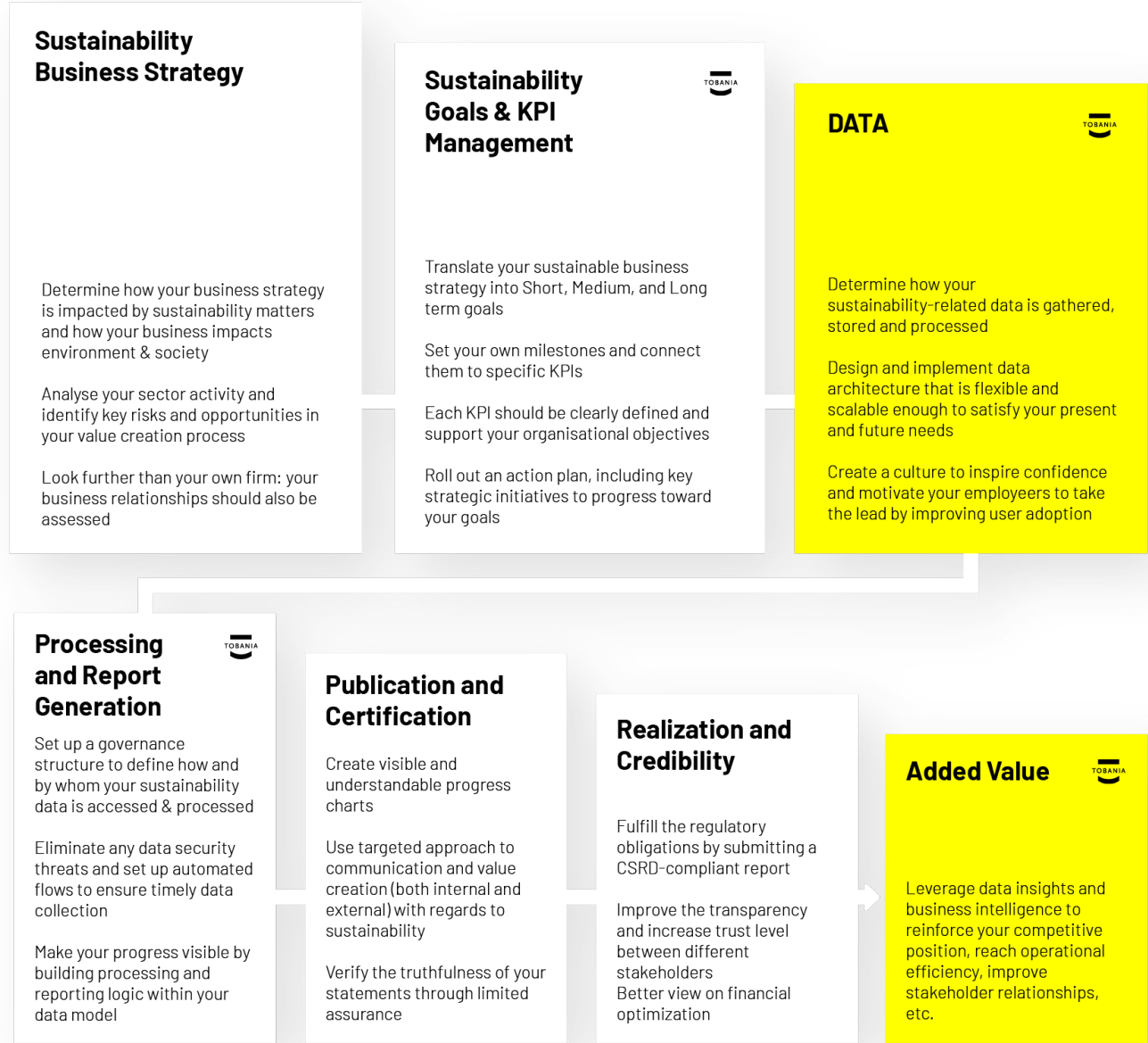
Generating the data is not enough. With our Data Lake model solution, you can collect, store and process data transparently, securely and efficiently.

Data Analytics

Our data experts can help you build a comprehensive, intelligent analytics solution to leverage sustainable data, gain insights and improve decision-making.

Our shared routes during your sustainability journey

Your sustainability strategy planning will take several stages. To bring them to a successful conclusion, our expert team will guide you alongside the way. From KPI Management to delivering your final business value, count on us as your trusted wingman.



Our differentiators

Want to become CSRD compliant? Tobania offers a solution in the form of a Data Lake model for capturing, storing and processing your data. And this brings along some very valuable assets:

1. We guarantee a **flexible solution** that can integrate any type of data and almost any type of data source.
2. **Transparency and data security** are our core components (Single Source of Truth & Total Backward Traceability).
3. We create added value through business intelligence in the form of **predictive and traditional analytics**.

6 <extra> reasons to get started with SDM

CSRD reporting is an important element of our Sustainability Data Modelling solution, although it is not the only driver of value creation. Other key value deliverables it brings along are:



Visualisation & Smart Data Tracking



Improved Data Security through Data Governance



Predictive & Explorative Analytics



Strategic Goals Monitoring & KPI Measurement



Stakeholder Communication & Credibility



Investments & Costs Analytics



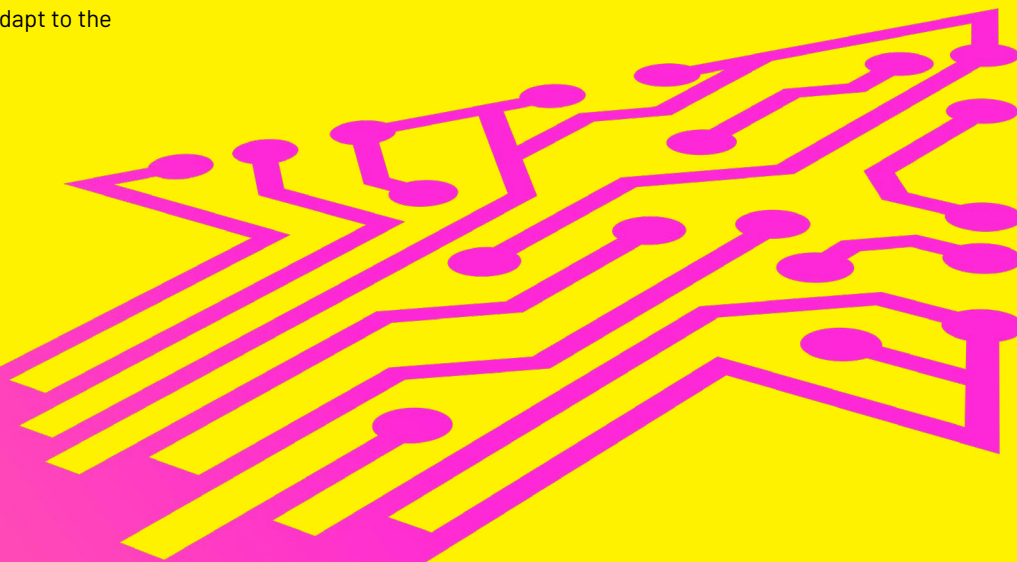
“Corporate Sustainability is all about establishing a precise perception of where you are now and where you want to be in the future. If you don’t know where you are headed, then how can you determine whether you have arrived?”

Vladimir Lyutyy

BUSINESS ANALYST AND SUSTAINABILITY
EXPERT AT TOBANIA

About Tobania

As a trusted Business and Technology Consulting partner, we help you valorise your business, data and technology. With the required expertise and a broad portfolio of services and solutions at hand, we help you tackle your data-driven digital transformation projects so that you can easily adapt to the rapidly changing world we live in today.



Let's talk about your sustainability plans.

Would you like to learn more about our Sustainability Data Modelling solution, team and approach? Our experts will be happy to help you further. So, be sure to get in touch:



Peter Wallegghem

BUSINESS DIRECTOR AT TOBANIA
peter.wallegghem@tobania.be
+32 475 59 69 99




Rob Stox

SMART.BUSINESS MANAGER AT TOBANIA
rob.stox@tobania.be
+32 473 61 79 57




Vladimir Lyutyy

BUSINESS ANALYST AND
SUSTAINABILITY EXPERT AT TOBANIA
vladimir.lyutyy@tobania.be
+32 2 300 80 30



Valorising business, data and technology



CONTACT US

Tobania | HQ Strombeek-Bever

Heizel Business Park - Building II
Romeinsesteenweg 564 - 4
1853 Strombeek-Bever

+32(0)2 300 80 30

info@tobania.be

www.tobania.be

[linkedin.com/company/tobania](https://www.linkedin.com/company/tobania)